

Belleville Chair

Ronan & Erwan Bouroullec, 2015

vitra.



Belleville is the name of the vibrant Paris neighbourhood where the designers Ronan and Erwan Bouroullec have their studio. Visual references for the Belleville Chair can be found in the classic French bistro furnishings and lively atmosphere of this Parisian quarter. The chair's familiar shape – even in a contemporary context – might at first be taken for granted, yet it also evokes a sense of mystery and bemusement, since the materiality, construction and fabrication of the chair only become apparent at second glance.

The Belleville Chair is a technically sophisticated plastic chair consisting of two components – a structural frame and a seat shell. Tracing the calligraphic lines of the legs and back, the slender black frame supports a thin shell that tapers from the wide seat surface into a narrow backrest. This type of construction opens up new perspectives for the plastic chair in relation to its material composition: the

identity of the Belleville Chair is defined by its seat shell. Available in coloured polypropylene or moulded plywood veneer, the appearance of the Belleville Chair can be transformed from a plastic chair to a wooden chair. An armchair version with forward sloping armrests is also available.

Paired with the Belleville Tables, the Belleville Chair and Armchair form a unified yet diverse group – a hybrid family of furnishings whose forms and materials are harmoniously coordinated. Thus the chairs and tables – in small or large numbers – can be attractively combined in bustling bistro settings as well as sleekly modern galleries or diversely styled home environments.

The Belleville chairs and armchairs with a plastic shell are also suited for use in outdoor areas.

Materials

Belleville Chair Wood

- **Seat shell:** moulded plywood, protective natural lacquer finish.
- **Base and frame:** injection-moulded polyamide. Stackable up to 5 high.

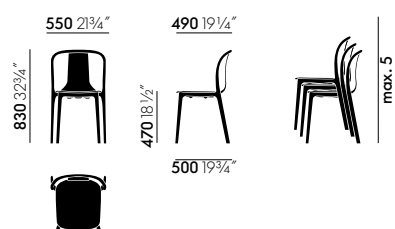
Belleville Chair

- **Seat shell, base and frame:** injection-moulded polyamide. Stackable up to 5 high.

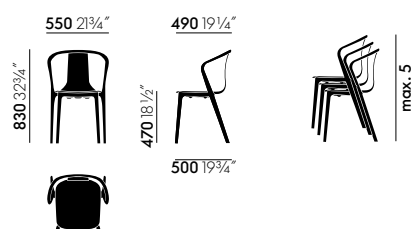


Outdoor use: suitable for utilisation outdoors on a temporary or seasonal basis, following care instructions. After prolonged exposure to the elements, clean and store away in a dry, sheltered place to ensure lasting use and avoid any deterioration in appearance.

DIMENSIONS (in accordance with EN 1335-1:2000)

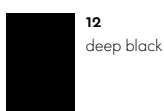


Belleville Chair



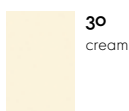
Belleville Armchair

COLOURS AND MATERIALS

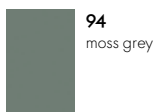


12
deep black

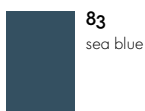
Base



30
cream



94
moss grey



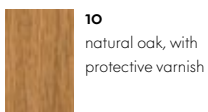
83
sea blue



35
basalt



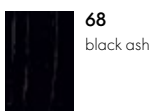
12
deep black



10
natural oak, with
protective varnish



04
dark oak, with
protective varnish



68
black ash

Seat shell Plastic

Seat shell Wood

